

Mob1A Polyclonal Antibody
Catalog # AP70993**Specification**

Mob1A Polyclonal Antibody - Product Information

Application	WB, IHC-P
Primary Accession	Q7L9L4
Reactivity	Human, Mouse, Monkey
Host	Rabbit
Clonality	Polyclonal

Mob1A Polyclonal Antibody - Additional Information**Gene ID** 92597**Other Names**

MOB1B; MOB4A; MOBKL1A; MOB kinase activator 1B; Mob1 homolog 1A; Mob1A; Mob1B; Mps one binder kinase activator-like 1A

Dilution

WB~~Western Blot: 1/500 - 1/2000. Immunohistochemistry: 1/100 - 1/300. ELISA: 1/40000. Not yet tested in other applications.

IHC-P~~N/A

Format

Liquid in PBS containing 50% glycerol, 0.5% BSA and 0.09% (W/V) sodium azide.

Storage Conditions

-20°C

Mob1A Polyclonal Antibody - Protein Information**Name** MOB1B ([HGNC:29801](#))**Synonyms** MOB4A, MOBKL1A**Function**

Activator of LATS1/2 in the Hippo signaling pathway which plays a pivotal role in organ size control and tumor suppression by restricting proliferation and promoting apoptosis. The core of this pathway is composed of a kinase cascade wherein STK3/MST2 and STK4/MST1, in complex with its regulatory protein SAV1, phosphorylates and activates LATS1/2 in complex with its regulatory protein MOB1, which in turn phosphorylates and inactivates YAP1 oncoprotein and WWTR1/TAZ. Phosphorylation of YAP1 by LATS1/2 inhibits its translocation into the nucleus to regulate cellular genes important for cell proliferation, cell death, and cell migration. Stimulates the kinase activity of STK38L.

Cellular Location

Cytoplasm. Nucleus

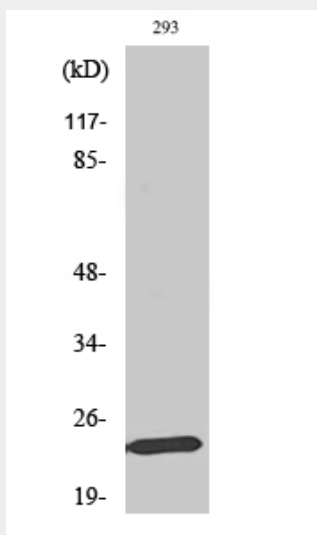
Tissue Location

Adrenal gland, bone marrow, brain, lung, placenta, prostate, salivary gland, skeletal muscle, testis, thymus, thyroid gland, uterus, colon with mucosa, fetal brain and fetal liver

Mob1A Polyclonal Antibody - Protocols

Provided below are standard protocols that you may find useful for product applications.

- [Western Blot](#)
- [Blocking Peptides](#)
- [Dot Blot](#)
- [Immunohistochemistry](#)
- [Immunofluorescence](#)
- [Immunoprecipitation](#)
- [Flow Cytometry](#)
- [Cell Culture](#)

Mob1A Polyclonal Antibody - Images**Mob1A Polyclonal Antibody - Background**

Activator of LATS1/2 in the Hippo signaling pathway which plays a pivotal role in organ size control and tumor suppression by restricting proliferation and promoting apoptosis. The core of this pathway is composed of a kinase cascade wherein STK3/MST2 and STK4/MST1, in complex with its regulatory protein SAV1, phosphorylates and activates LATS1/2 in complex with its regulatory protein MOB1, which in turn phosphorylates and inactivates YAP1 oncoprotein and WWTR1/TAZ. Phosphorylation of YAP1 by LATS1/2 inhibits its translocation into the nucleus to regulate cellular genes important for cell proliferation, cell death, and cell migration. Stimulates the kinase activity of STK38L.